

Aimetis™ Outdoor Object Tracker

Release Notes

Disclaimers and Legal Information

Copyright© 2016 Aimetis Inc. All rights reserved.

This material is for informational purposes only. AIMETIS MAKES NO WARRANTIES, EXPRESS, IMPLIED OR STATUTORY, AS TO THE INFORMATION IN THIS DOCUMENT.

Complying with all applicable copyright laws is the responsibility of the user. Without limiting the rights under copyright, no part of this document may be reproduced, stored in or introduced into a retrieval system, or transmitted in any form or by any means (electronic, mechanical, photocopying, recording, or otherwise), or for any purpose, without the express written permission of Aimetis Corp.

Aimetis may have patents, patent applications, trademarks, copyrights, or other intellectual property rights covering subject matter in this document. Except as expressly provided in any written license agreement from Aimetis, the furnishing of this document does not give you any license to these patents, trademarks, copyrights, or other intellectual property.

Aimetis and Aimetis Symphony are either registered trademarks or trademarks of Aimetis Corp. in the United States and/or other countries.

Document History

July 18, 2016	Release 1.2.5
June 1, 2016	Release 1.2.4
April 21, 2016	Release 1.2.3
March 29, 2016	Release 1.2.2
February 22, 2016	Release 1.2.1
November 24, 2015	Release 1.2.0
June 17, 2015	Release 1.1.0
April 10, 2015	Release 1.0.0

Version 1.2.5

Compatible with Symphony 6.14.3 or higher.

Fixes

Issue ID	Description
EMB-308	Properly track vehicles that are close to the camera when they enter the field of view.
EMB-309	Tracking is no longer reset when vehicles enter directly below the camera.

Version 1.2.4

Compatible with Symphony 6.14.3 or higher.

Fixes

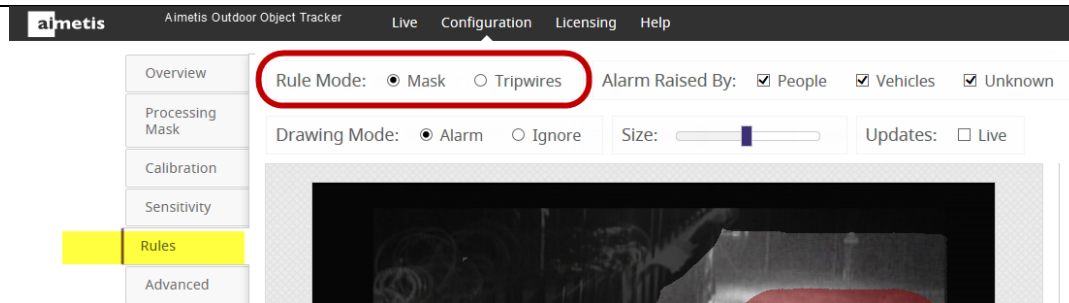
Issue ID	Description
EMB-306	Fixed issue of cropped image in calibration, masks, and tripwire configuration views.

Version 1.2.3

Compatible with Symphony 6.14.3 or higher.

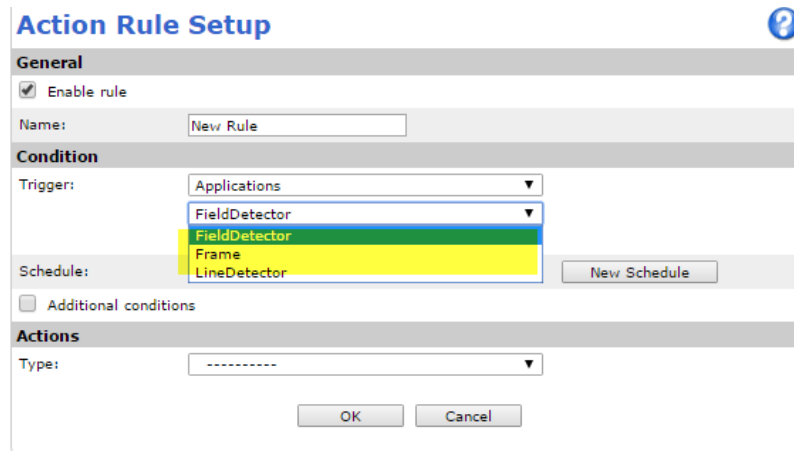
Fixes

Issue ID	Description
EMB-299	Improved long-term stability of AOOT running on camera.
EMB-300	Erroneous error message no longer displayed on startup.
EMB-301	Previously, switching between Mask and Tripwires selection in the AOOT interface left decorations on screen. (Only restarting AOOT removed these decorations.) Now, you can successfully switch between Mask and Tripwires selection in AOOT interface with no decoration remnants.



IMPORTANT: The **Trigger** event selected in the Axis camera setup interface **MUST** match the **Rule Mode** configured in the AOOT interface.

In the Axis camera setup interface, **Action Rule Setup** screen:



From the **Trigger** dropdown, select **Applications**.

- If you are using a **mask** rule in Aimetis Outdoor Object Tracker, select **FieldDetector** and select Yes for IsInside.
- If you are using a **tripwire** rule in Aimetis Outdoor Object Tracker, select **LineDetector**.

<https://www.aimetis.com/Xnet/KB/KBArticleView.aspx?ID=10429>

Version 1.2.2

Compatible with Symphony 6.14.3 or higher.

Fixes

Issue ID	Description
EMB-296	AOOT correctly alarming on specified classes. For example, on vehicles or person objects exclusively.

Version 1.2.1

Compatible with Symphony 6.14.3 or higher.

Improvements

Issue ID	Description
EMB-295	Support for Axis P1435-LE camera.

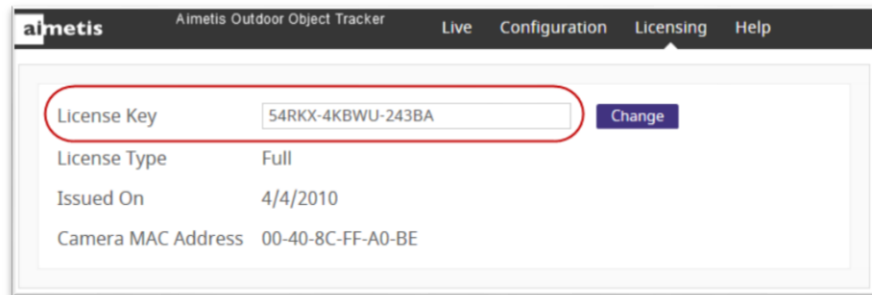
Version 1.2

Compatible with Symphony 6.14.3 or higher.

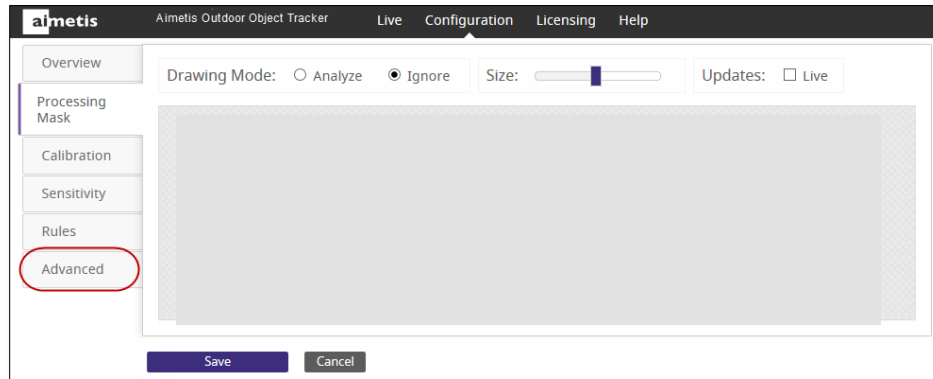
IMPORTANT:

Due to a name change for the product:

1. Before upgrading, save your license key. You will have to re-enter the license key in the **License Key** field of the License dialog box in the Aimetis Outdoor Object Tracker screen.



2. After upgrading, you must reconfigure your **analytics AND rules**.
Optional – **BEFORE upgrading** you can export the analytic configuration and import it **AFTER** the upgrade by using the export/import options in the **Advanced** tab.
 - **Import XML** - Allows you to load an analytic engine state XML from disk and manually modify the XML. Once you click OK, the XML is applied to the analytic.
 - **Export XML** - Allows you to save the current analytic settings state XML.



Fixes

Issue ID	Description
EMB-262	AOMD acronym changed to AOOT and will now appear in URL links, error messages, VE500 logs, Axis camera logs, and XML files.
EMB-283	Rules: Actions working correctly with schedule.

Version 1.1.0

Important: The Aimetis Outdoor Motion Detection analytic has been renamed to Aimetis Outdoor Object Tracker.

New Features

Issue ID	Description
EMB-222	Rules can be defined based on object classification: People, Vehicles, Unknown.

Improvements

Issue ID	Description
EMB-224	Tracked objects now have classifications: People, Vehicles, Unknown.
EMB-229	Interface now available in Swedish.
EMB-258	Aimetis Outdoor Motion Detection analytic has been renamed to Aimetis Outdoor Object Tracker.

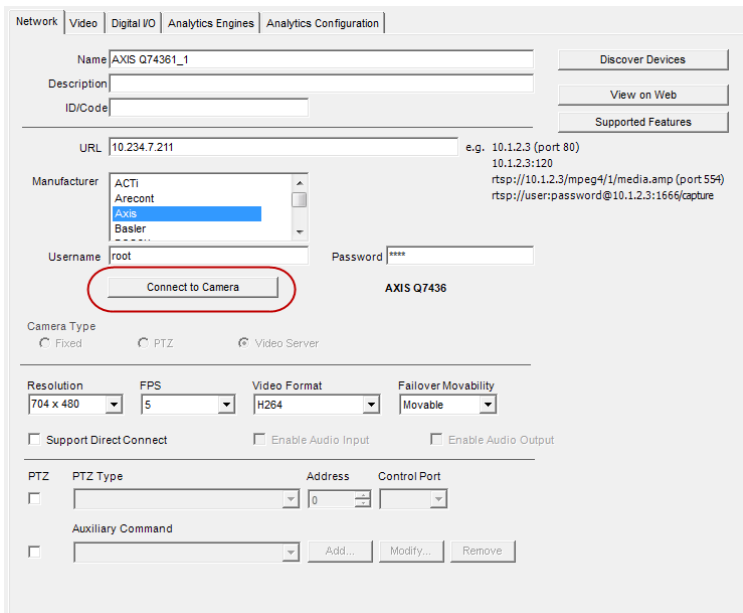
Version 1.0.0

Improvements

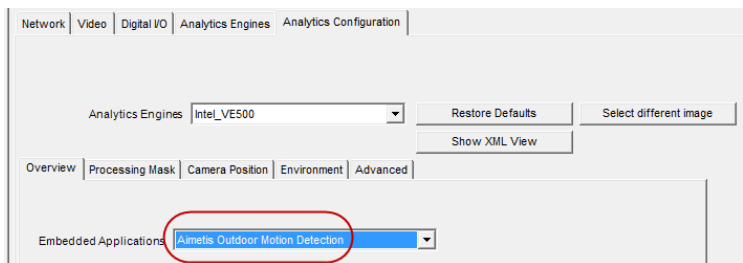
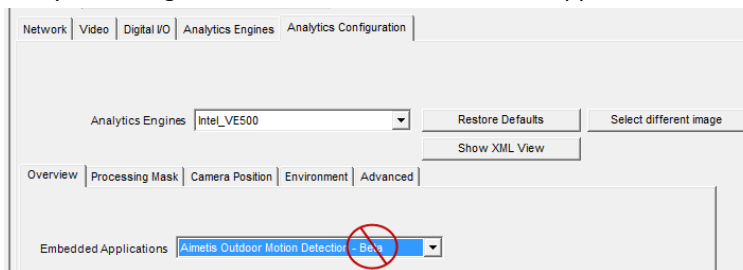
Issue ID **Description**

EMB-181 Camera firmware 5.60.x or later required <http://www.axis.com/techsup/firmware.php>

EMB-194 If running VE500 in Symphony, click **Connect to Camera** and select **Aimetis Outdoor Motion Detection** (the non-Beta version) on the **Analytics Configuration>Overview** tab.



Analytics Configuration>Overview tab, Embedded Applications



Known Issue

Issue ID	Description
EMB-215	If you want to configure the analytic from the web AFTER having configured it using Symphony (VE500), you must reset AOMD to factory defaults. Ideally, do not use the camera web interface if you plan to use Symphony to configure the analytic. (Use the AOMD camera web interface ONLY for non-Symphony AOMD integration.)